



Brookfield Health & Wellness
Integrative healing for the body, mind & spirit

Disclaimer Agreement ENERGY ENHANCEMENT SYSTEM – The EE System

I, _____, understand the staff members at Brookfield Health & Wellness, LLC, (BHW) are not medical doctors and do not proclaim to be, and that nothing shared by the staff members should be taken as medical advice. I also agree that I, _____, am the sole responsible party for my own health and I have the ability to research all of the information about the services rendered and decide what is best for my personal health objectives(s). BHW and its staff members act with integrity and abide by the principle of “Do No Harm”. Should any harm come to me, I hold BHW and its staff members harmless. I have researched the EE System and have deemed it to be safe and desirable to enhance my health at a cellular level and hold no harm to BHW, its staff members or the EE System itself. No claims are made to guarantee any specific healing or cure for disease. I also agree that the EE System shall not be touched by clients, pets or children, and any damage that may occur as a result will be charged to myself, the client.

Please list any diagnosed medical condition(s) or symptom(s) you are currently aware of, or are experiencing: _____

Are you on any blood thinning medication(s)? Y_____ N_____

Are you on any blood pressure medication(s) Y_____ N_____

Are you diabetic and/or on any insulin? Y_____ N_____

Are you on any other blood sugar regulating medication(s)? Y_____ N_____

*If you answered yes to any of the above questions, by signing this agreement you are aware that you are responsible for having your blood and heart monitored after exposure to scalar wave

therapy to monitor any positive corrections in the blood and/or heart performance which may result in the need to reduce the dosage(s) of these medications. Diabetics are responsible for monitoring their blood sugar levels and regulating it as needed. Client initials _____.

Please rate the following on a scale from 1-10 (1=Non existent, 10=Severe)

Level of anxiety prior to session _____

Level of pain prior to session _____

Ability to focus prior to session _____

Joint swelling prior to session _____

Other _____

By signing this disclaimer agreement, I agree that I am solely responsible for making the appropriate decisions for my personal health and hold BHW and its staff members harmless for any results observed from my visit(s) to the EE System. I understand results may vary per individual and that no guarantees are implied or expressed regarding treatment at BHW. I further understand and agree payments are due in full at time of appointment reservation and a refund will not be provided in the event client is a no call no show for his/her reserved appointment.

Your signature below constitutes your acknowledgement you have read and agree to this document, and you authorize and consent to the EE System therapy being offered.

Client Signature

Date

Address City State Zip

Phone

Email



ENERGY ENHANCEMENT SYSTEM – THE EE System

Brookfield Health & Wellness
Integrative healing for the body, mind & spirit



“The power that created the body
heals the body”

Cell Regeneration
Improved Circulation
Pain Relief
Elevate Mood
Sleep Support
...and much MORE!

The Energy Enhancement System (EE System) combines body, mind, spirit, and science to support optimum performance and reach higher states of health, consciousness, and self-actualization. This system generates multiple bio-active life-enhancing energy fields, including bio-scalar waves and a morphogenic energy field – also known as a torsion field or scalar vortex – that when combined with light as biophotons, can interface with the body’s DNA matrix and promote healing.

This technology gives our body’s the ultimate fuel it needs to rejuvenate and recalibrate us back to homeostasis. Among a myriad of benefits, by assisting in cell regeneration, this system helps to improve one’s immune function, aids in body detoxification, and provides pain relief. The human body has crystalline structures in every cell wall that are capable of holding a charge. When the human body enters a Scalar field the electromagnetic field of the individual becomes excited. This excitement catalyzes the mind/body complex to return to a more optimal state. Cells in the human body, when functioning at their maximum health potential, operate in a range between 70-90 millivolts. Aging and disease occur when the cellular energy depreciates to levels below this range (with the current state of the world the majority of the population has cells functioning well below this range).

The non-linear (scalar) waves move through the matrix to the body via the crystalline structures within each cell's millivolt energy range to promote cellular regeneration. As the cells become charged, they begin to release toxins that have been held in them. Research has indicated that exposure to scalar fields can promote the repair of DNA, including breaks and genetic damage in the DNA matrix, as well as lengthen telomeres.

This technology gives our bodies the ultimate fuel for improving circulation, oxygenation and increasing cellular energy. At optimum energy levels (higher frequencies), the body can become capable of rejuvenating and recalibrating itself back to homeostasis.

The EESystem has been clinically studied by multiple 3rd party individuals. These studies have provided evidence of the potential of bio scalar energy to boost human cell regeneration, immune functions, and neurotransmitter functions. It can help eliminate and nullify effects of disruptive frequencies in the body while optimizing cellular energy levels to 70-90 millivolts.

This means that EESystem can significantly increase your energy, mental clarity, enhanced health, and overall well-being.

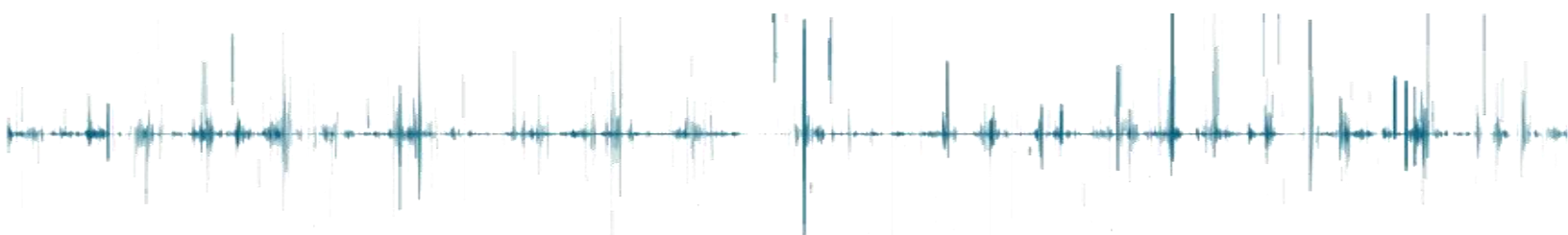
To get more of the science and to gain a greater understanding of this incredible health tool watch, The Revolution of Healing Part 1 and Part 2, an interview with Dr. Sandra Rose Michael, the inventor of this amazing system.

WHAT CAN I EXPECT TO FEEL?

You have your own divine blueprint. Each person's body has energy needs that will be prioritized by the body's wisdom. You may be surprised by how clear your brain feels and how deeply relaxed you feel within just a few hours in the EE System.

The effects of sitting in this "charged" field are cumulative. The more you are exposed, the more your body can move toward a healthy millivolt level. The body begins to rejuvenate itself and initiates a powerful process of self-healing. EESystem provides the ideal "frequency bath" and the body responds with its innate wisdom, recalibrating to homeostasis.

It is recommended that the minimal session length in the EE System, to optimize cellular health, is two (2) hours. Those individuals with significant health challenges will benefit from 4-8 hours sessions several times weekly. To assist in determining what session length is best for you please see a wellness team member and they will confer with our practitioner for best practice.



WHAT ARE SOME OF THE BENEFITS PATIENTS HAVE REPORTED AFTER EE SESSIONS?

- Improved sleep
- Increased physical stamina and energy
- A sense of peace and calmness
- Physical, emotional, and spiritual harmony
- Improved focus & concentration
- Mental clarity
- Elevated mood
- Improved stress response
- Enhanced learning capabilities
- Improved immune function
- Improved pain management
- Improved sense of wellbeing
- Releasing of past traumas
- Relief from depression
- Healing & Rejuvenation

HOW DO I PREPARE FOR A SESSION?

Come with an open heart and mind and set intentions to unplug, reboot, relax and support your wellbeing.

- We ask that you please arrive 10-15 minutes before your scheduled session to ensure smooth check in and to allow for any questions you may have.
- Drink plenty of water before, during and after your EE session. Proper hydration will help your body adjust to the energy being received.
 - Complimentary water, electrolytes and teas will be available.
- For your comfort during a session wear comfortable clothes, bring socks, blanket, and a small pillow. Sleep during treatment is the ultimate goal. Please refrain from wearing perfume.
- We discourage use of electronic devices, and any video recordings without permission.
- Bring along noise cancelling headphones to listen to your favorite meditation, podcast, or musical artist.
- Sleep masks and ear plugs are also recommended and are available for purchase.
- Bring healthy snacks for replenishment. Especially for those planning a session of four (4) hours or more.
 - No food is allowed in the EE System treatment space. A member of our wellness team will direct you to our lounge and kitchen area.
- Bring along medications and supplements to expose in the EE System to improve biocompatibility.
- An Ionic footbath is highly encouraged immediately following your session to reduce detoxification side effects. A wellness team member will be happy to assist in getting you scheduled.
- If a footbath is not completed on-site after your session a salt bath within 24 hours is recommended to flush toxins. The sea salt bath salts formulated by the EE System are beneficial and necessary for toxin extraction and are available for purchase.

WHAT TO EXPECT IN OUR 16-UNIT EE SYSTEM

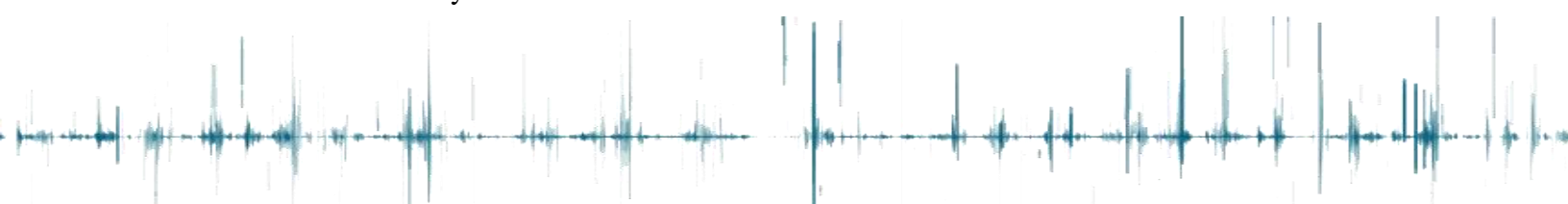
Come with clear intentions of what you want to achieve in the EE System. Prepare yourself for the deepest sleep/ meditation of your life and start to allow your body to heal itself.

The EE System room has been designed and created for your comfort and healing. During each session we ask the following:

- Be mindful of others during your EE session.
- Cell phones must be on silence and/or vibrate mode.
- Communication during a session should be kept to a minimum to ensure the optimal level of healing.
 - If you have questions, or must take a call, please step out of the healing space. Failure to comply with this requirement may result in loss of future appointments.
- To enhance your session experience, please see a team member to schedule supplemental therapies during your EE session:
 - Ionic Footbath
 - NanoVi
 - Auricular Ozone
 - 30' Chair Massage
 - PTL II Laser Therapy
 - FSM Custom Carep

SPECIAL NOTE(S):

- **THE SCREENS/RACK SYSTEM CAN NOT BE TOUCHED.** Any physical contact with the EE System will create the system to be out of balance.
- All sessions must be paid at time the appointment is made.
- Cell phones must be kept on silent, or in text mode only. Non-compliance with this requirement may result in loss of future reservations.
- Results will vary for each individual.



Your signature below constitutes your acknowledgement you have read and agree to this document, and you authorize and consent to the EE System therapy being offered.

Client Signature

Date